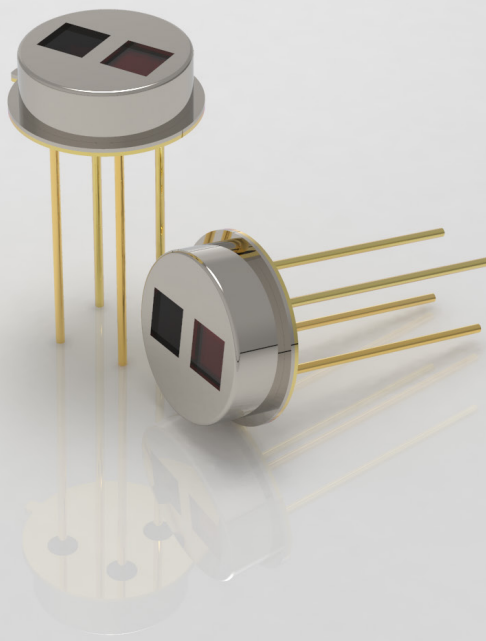


MTP20-A6-CO



Infrared Thermopile Gas Sensor

A dual-channel carbon monoxide gas sensor



vehicle electronics



smart building

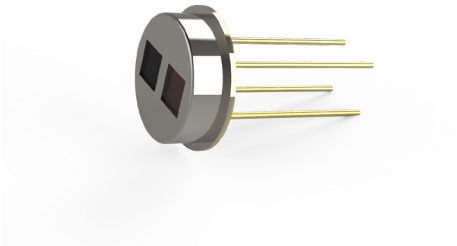


Coal mine, oil smart building and
gas detection

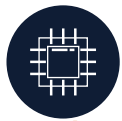


Chemical gas
production

MTP20-A6-CO



The MTP20-A6-CO infrared thermopile gas sensor is based on the principle of NDIR (non-dispersive infrared) technology and embedded with high-precision NTC thermistor and MEMS thermopile chip. It has the characteristics of high sensitivity, high precision, excellent long-term stability, low maintenance cost and long service life. It can be widely used in coal mines, oil and gas detection, chemical gas production, smart buildings, automotive electronics and other fields.



MEMS thermopile chip



TO-39 (dual channel)



High sensitivity



High precision NTC



4.75/3.95µm narrow band filter

Product parameters

Model	MTP20-A6-CO
Detect gas type	CO
Package form	TO-39 (dual channel)
Center wavelength (working channel/reference channel)	4.75µm/3.95µm
Half-wave width (working channel/reference channel)	180nm/90nm
Peak transmittance	> 80%
Working temperature	-30~100°C
Storage temperature	-40~125°C

Shenzhen MemsFrontier Electronics Co.,Ltd.

Web: www.memsf.com

E-mail: info@memsf.com

Tel: 0755-21386871

Add: 3rd Floor B2 Building, Zhaoshangju Technology Park,
Guangming District, 518107, Shenzhen, China