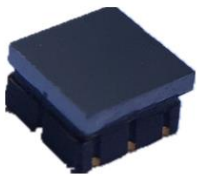


Specification Thermopile Sensor

MTP20-S1-CO₂



规格:

- MEMS 热电堆原理
- SMD P封装, 小尺寸 (单通道)
- 高度灵敏性
- 4.26 μ m 窄带滤光片
- 高精度NTC

应用:

- NDIR CO₂ 气体探测器
- 中心通风设备系统、HVAC
- 室内空气质量监测
- 车内空气净化器

Model No.: MTP20-S1-CO₂	Approved by	Checked by	Drawn by
Rev. 04 / Date 2017.09			

Model No.: MTP20-S1-CO₂

Absolute Maximum Ratings

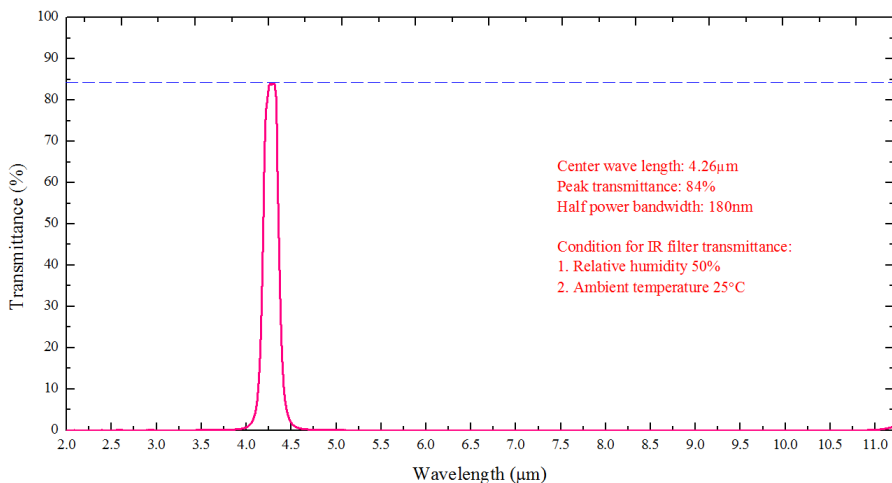
Parameter	Value	Unit
Operating temperature	-30 to +100	° C
Storage Temperature	-40 to +125	° C

Performance specifications

Parameter	Value	Unit	Conditions
Chip size	1.1 X 1.1	mm ²	
Sensitive area	0.35 X 0.35	mm ²	
Field of view	120	°	At 50 % intensity points
Thermopile resistance	130 ± 10	kΩ	Temp.=25°C
Noise voltage	46 ± 2	nV/Hz ^{1/2}	Temp.=25°C
NEP	0.709	nW/Hz ^{1/2}	500K, 1Hz
Responsivity	85	V/W	500K, 5.5μm (Long pass)
Temp. coefficient of resistance	0.06	%/°C	Temp.=25°C-75°C
Time constant	13	ms	
Specific detectivity	0.5 E08	cmHz ^{1/2} /W	500K, 1Hz
Thermistor resistance	100 ± 3%	KΩ	25°C
Thermistor BETA-value	3950 ± 1%	K	25°C/50°C

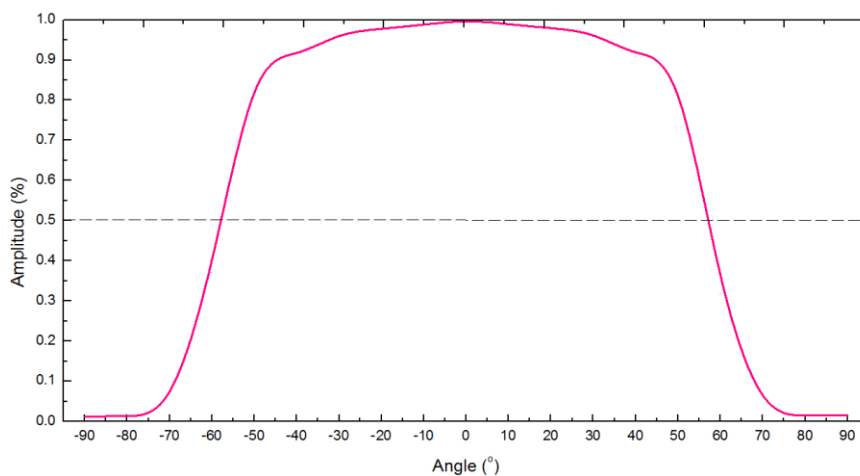
Filter specifications

Parameter	Value	Unit	Description
Center wave length	4.26	μm	Narrow band pass
Half power bandwidth	180	nm	
Peak transmission	> 80	%	



Optical characteristics

Parameter	Value	Unit	Description
Field of view	120	$^{\circ}$	50% Maximum signal



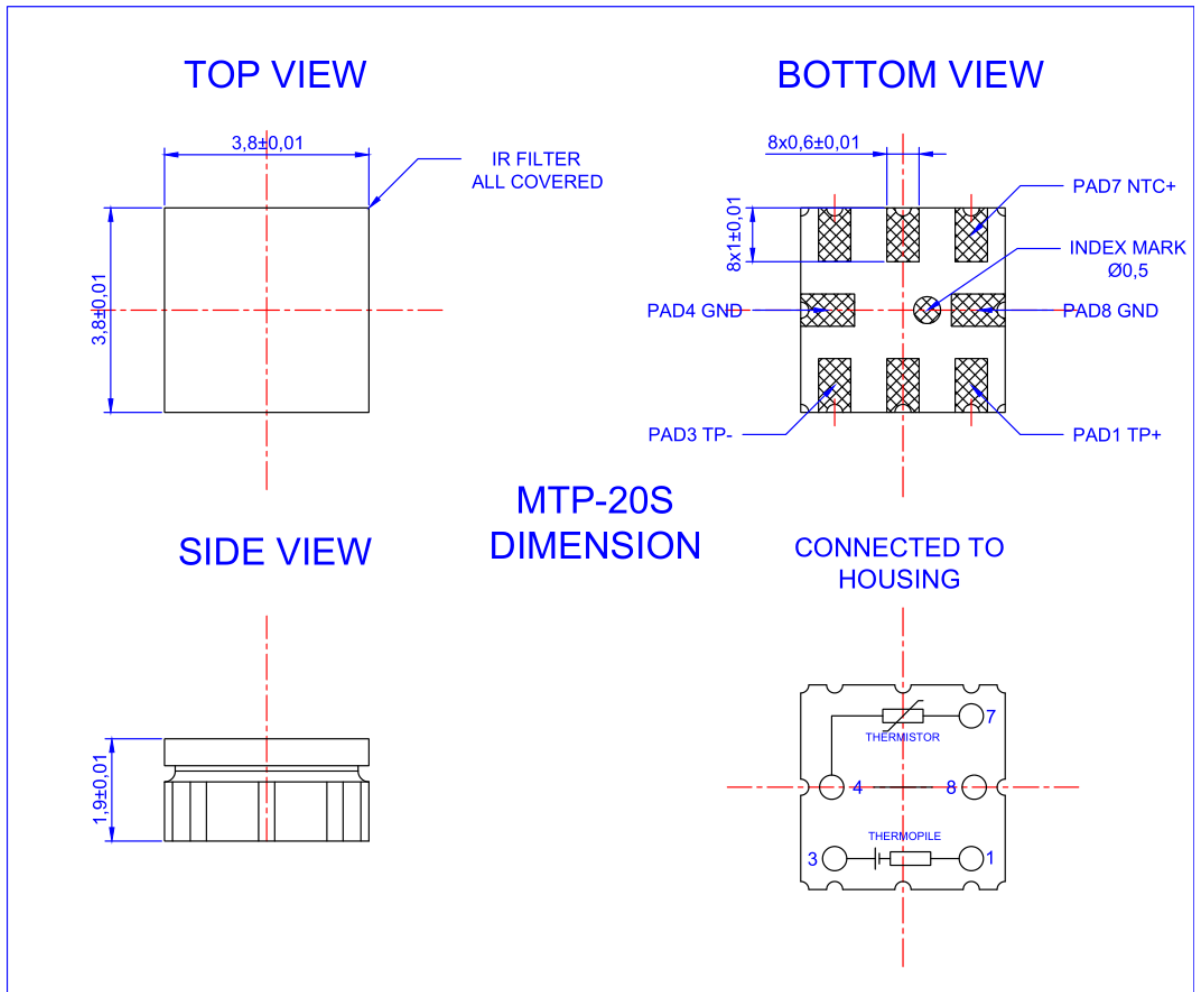
Temperature vs. Resistance of NTC

T(°C)	R(KΩ)	T(°C)	R(KΩ)	T(°C)	R(KΩ)
-20	930.50	20	125.86	60	24.831
-19	880.14	21	120.24	61	23.959
-18	832.84	22	114.86	62	23.122
-17	788.37	23	109.70	63	22.317
-16	746.54	24	104.75	64	21.545
-15	707.18	25	100.00	65	20.803
-14	670.11	26	95.642	66	20.089
-13	635.18	27	91.506	67	19.404
-12	602.26	28	87.577	68	18.744
-11	571.20	29	83.845	69	18.110
-10	541.90	30	80.299	70	17.501
-9	514.23	31	76.926	71	16.914
-8	488.10	32	73.718	72	16.350
-7	463.41	33	70.665	73	15.806
-6	440.07	34	67.759	74	15.283
-5	417.99	35	64.991	75	14.780
-4	397.10	36	62.355	76	14.295
-3	377.34	37	59.842	77	13.828
-2	358.62	38	57.446	78	13.378
-1	340.89	39	55.161	79	12.945
0	324.10	40	52.980	80	12.527
1	307.68	41	50.900	81	12.124
2	292.34	42	48.913	82	11.736
3	277.99	43	47.016	83	11.362
4	264.53	44	45.203	84	11.001
5	251.89	45	43.471	85	10.653
6	240.00	46	41.815	86	10.317
7	228.78	47	40.231	87	9.9932
8	218.20	48	38.717	88	9.6806
9	208.19	49	37.267	89	9.3789
10	198.71	50	35.880	90	9.0876
11	189.72	51	34.552	91	8.8064
12	181.19	52	33.280	92	8.5349
13	173.07	53	32.061	93	8.2727
14	165.35	54	30.894	94	8.0195
15	157.98	55	29.775	95	7.7749
16	150.96	56	28.702	96	7.5385
17	144.26	57	27.673	97	7.3102
18	137.85	58	26.687	98	7.0895
19	131.72	59	25.740	99	6.8762
				100	6.6700

Electrical connections

Pin	1	2 / 5 / 6	3	4/8	7
Define	Thermopile -	Not connected	Thermopile +	GND	NTC

Mechanical dimensions



Shenzhen MemsFrontier Electronics Co. Ltd.

深圳市美思先端电子有限公司

301, 3C Huiye Industrial Park, New Guangming District, Shenzhen

深圳市光明新区观光路1号汇业科技园3C-301

Website: www.memsf.cn

Tel: +86-0755-21386871